



HERMIT 3000

**Powerful multi-channel data logger!
Includes eight channels, internal
barometric sensor, large keypad,
backlit display and two relays**

Rugged and reliable
construction for extreme envi-
ronments

Excellent for multi-well
aquifer testing and
long-term monitoring

Large easy-to-read
display and keypad, or
use directly with a PC



Now you can...

- Quickly perform multi-well aquifer tests
- Record up to a million data points on eight channels
- Set up tests in the field without a laptop
- Control pumps with built-in relays
- Download data without stopping the test
- View data anytime using large backlit display
- Monitor and record barometric changes automatically
- Network up to 32 units and communicate via telemetry

Introducing the HERMIT 3000, the next generation of HERMIT data loggers. Versatile, reliable, networkable and surprisingly inexpensive. One HERMIT 3000 monitors up to nine inputs simultaneously: eight external 4-20 mA channels plus an internal barometric pressure sensor.

Harness the power of the HERMIT for multi-well aquifer testing or long-term monitoring. Collection of fast, early-time draw-down data for constant or stepped-rate tests is simple.

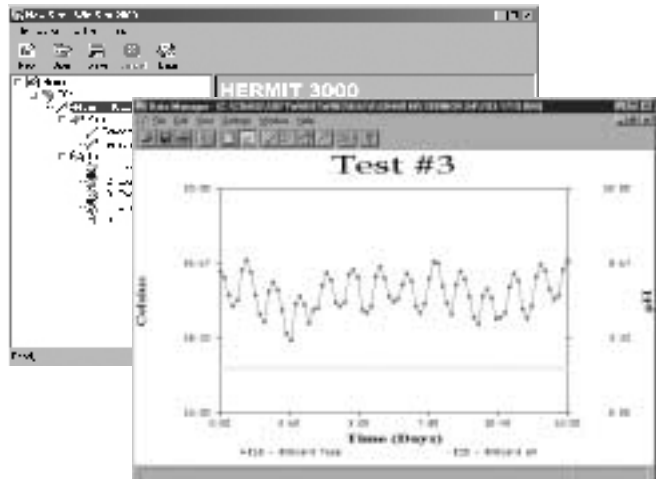
The HERMIT's rugged design and quality electrical components make it accurate and precise even under extreme environmental conditions. The housing is tough, lightweight, and watertight. The large keys are easy to use, even when wearing gloves.

Creating tests and viewing data is simple using the keypad and display or Win-Situ software with a PC. There's never been a logger this friendly yet powerful.

Call us today to learn more!

With Win-Situ 2000 software, test setup and data presentation are easier than ever!

Quickly set up tests then download your data and graph the results all while the HERMIT continues to run!



Use it for...

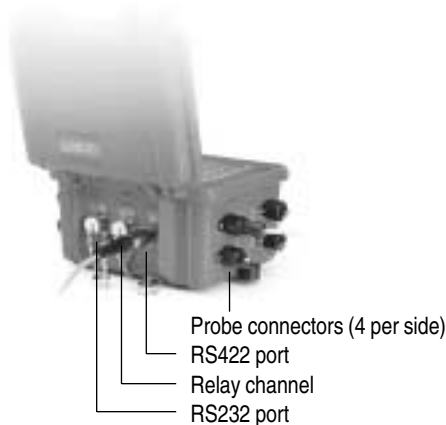
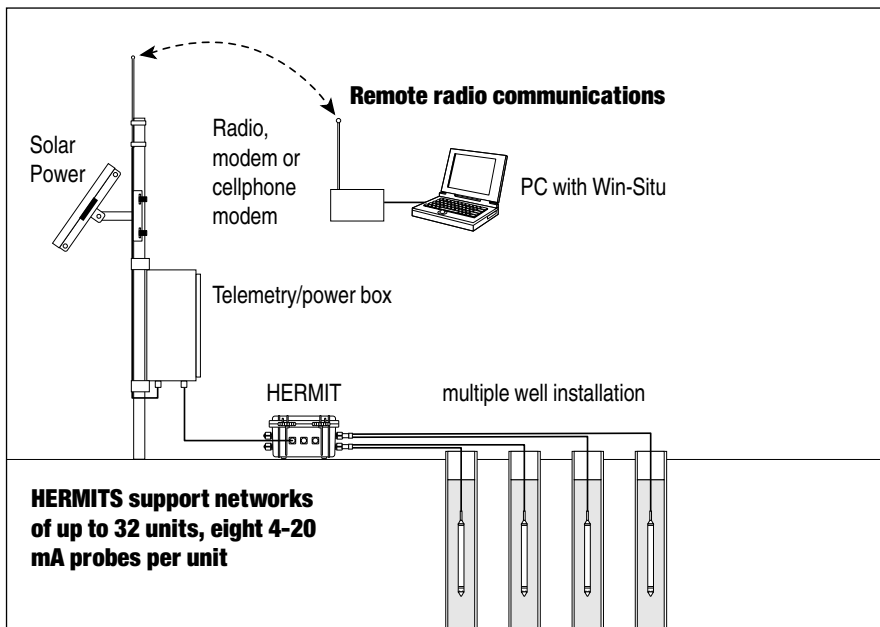
Multi-well pump tests	Waste disposal sites
Long-term monitoring	Remediation sites
Aquifer testing	Industrial & municipal
Water supply control	Estuaries & wetlands

Call us today to learn how this powerful water monitoring tool can work for you.

1-800-446-7488 or visit us on the internet at www.in-situ.com!

HERMIT 3000

Telemetry & Networks



The HERMIT features a generous display screen and large, raised touch-pad keys that are easy to use in low-light, even with gloves on, in cold or wet weather!



Specifications

General

- Case material: Injected plastic
- Dimensions: 12" wide, 10" deep, 6.75" high (30.5 x 25.4 x 17.2 cm)
- Weight: 8.5 lbs. (3.9 kg) alkaline, 8.2 lbs. (3.7 kg) lithium
- Operating/storage temperature: with alkaline battery -10° to 45°C (14° to 113°F) with lithium battery -40° to 70°C (-40° to 158°F)
- -20° to 70°C (-4° to 158°F) for internal barometric sensor

Data Sampling

- Number of channels: 8 external plus 1 internal (barometric sensor)
- Memory type: Non-volatile
- Capacity: 944 Kilobytes (at least 475,000

data points)

- Accuracy: $\pm 0.05\%$ of full scale
- LCD: 5.75" x 1.25" (14.6 x 3.2 cm), 4 lines of 40 characters each
- backlit display

Probe Input

- Type: Standard 4-20mA probes
- Source voltage: 20 V DC, pulsed
- Source current: 80 mA max.
- Source pulse width: 50 mS to 30 seconds (probe warmup time)
- Input resistance: 150 ohms typical
- Maximum cable length: 5000 ft. (with In-Situ pressure probe)
- Relays: 2 relays; maximum current: 0.5 amp at 115 V AC, 1 amp at 30 V DC, 5 amps at 5 V DC

Communications

- Type: RS232 and RS422 (for networking)
- Hardware compatibility: IBM 9-pin

External Power Input

- Input voltage: 15 V (RS232), 48 V (RS422)
- Input current: 200 to 500 mA (with backlight)

Battery Options

- Alkaline (user-replaceable) or Lithium
- Clock/memory battery: 5-year factory-replaceable backup battery

Battery Type	Data Points (est.)	Life* (est.)
Lithium	1,500,000	5 years
Alkaline	500,000	2 years

*taking data from one channel every 15 minutes within the operating temperature range, using external power during setup and download. Battery life decreases with heavy use of keypad and backlight.

Purchase - Rent - Lease the HERMIT 3000 Today!



In-Situ Inc.

Environmental Monitoring Systems. Buy the Best.™

210 South Third Street • Laramie, WY 82070 USA
Telephone: 307 742 8213 • Fax: 307 721 7598

1-307-742-8213 • 1-800-4INSITU

(International and domestic calls) (toll-free in US and Canada)

www.in-situ.com

Try it with a handheld!



NEW Pocket-Situ software runs on the iPAQ Color Pocket PC from Compaq. It is the perfect solution for field work with the TROLL 9000!



Due to continuing product development, this information is subject to change without notice.

Copyright © 2001 by In-Situ Inc. All rights reserved. In-Situ, HERMIT, Win-Situ, and Pocket-Situ are trademarks or registered trademarks of In-Situ Inc. 10/2001