



Introducing the **NEW**

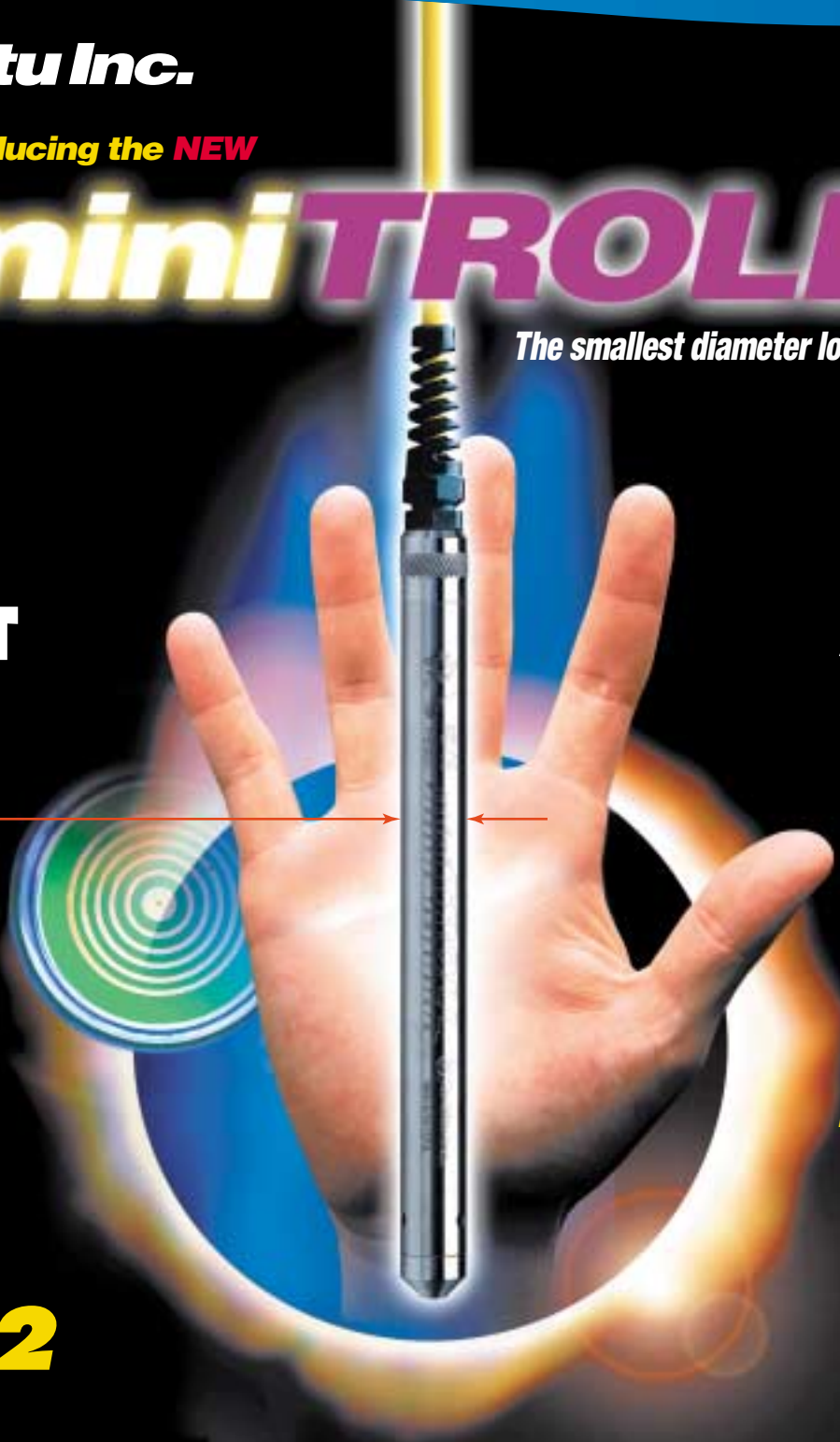
mini**TROLL**TM

The smallest diameter logger

**SUPER
SMART**

**SUPER
SMALL**

0.72"
only 18.3mm OD!



- Up to 16 tests*
- Optional SDI-12*
- 440,000 dp memory*
- Quick-Connect cables*
- Telemetry & Networking*
- Replaceable AA batteries*
- PC or Pocket PC software*

Now with
SDI-12
and **Pocket PC**
options

Level · Temperature · Data logging



Patents Pending



AT A GLANCE:

- water level
- temperature
- data logging
- 1 MB memory
- internal power
- Quick-Connect™
- 32-bit software

18.3 mm
(0.72 in) OD



MAKE A QUANTUM LEAP INTO THE FUTURE OF WATER MONITORING

Patents Pend.

Get connected
with the world's most advanced submersible Quick-Connect™ cables. Polyurethane or FEP*. Desiccant and hydrophobic membrane block moisture.



Need Power?
User-replaceable AA batteries easily slide in and out, no tools required. Last up to 18 months.**



Super smart, super small.
Advanced microprocessor is packed with 1 MB of memory – log data for over six years at 15 minute intervals!

Tame harsh environments.
316 stainless steel body is durable and corrosion resistant.

Unmatched accuracy.
Ultimate 4-way compensation—Pressure readings are automatically compensated for barometric pressure, temperature, liquid density and gravitational acceleration!

*Teflon® equivalent.
**2 AA alkaline batteries, 15 minute sampling interval at 20°C.

USE IT FOR:

data collection in ground and surface water, including aquifers, estuaries, contaminated waters and effluent:

- aquifer testing: step, slug and pump tests
- mine and construction site dewatering
- long-term groundwater observation
- industrial water management
- water production wells
- small diameter wells
- thermal profiling
- tidal influence
- pump control



Easy access!

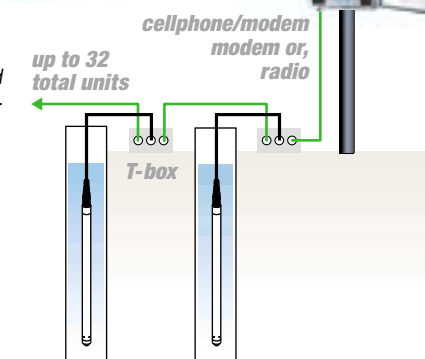


Cable connection and battery replacement are a snap.



Reduce your travel and labor costs with telemetry and network solutions

Telemetry systems are the perfect solution for remote sites, automated data collection. Multiple-well installations are a snap using T-Boxes or Quad-Boxes. Create a network of up to 32 units!



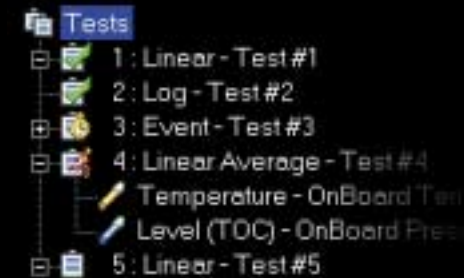
Win-Situ 2000



Easy-to-use Windows-based Win-Situ 2000 software is your key to harnessing the miniTROLL's power.

- define tests in the office or field with your PC
- display data in your choice of units
- define water level reference values

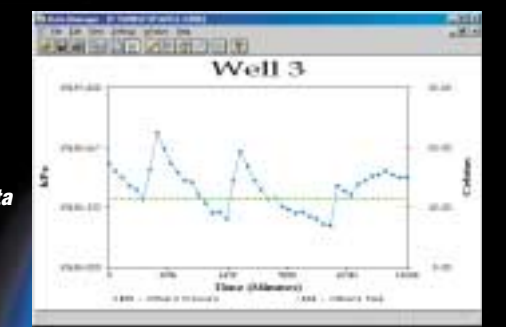
Win-Situ 2000 lets you define and store in the miniTROLL's computer 16 linear, logarithmic, linear average, or event tests, ready for manual or scheduled start.



Convenient Wizards help you set up tests, connect new devices, calibrate sensors and edit parameters.



With the click of a button the Data Viewer switches between report (tabular) and graph mode, or exports data to Excel. Customize and print graphs of your data.



General:

	Internal Power Model	External Power Model
Dimensions	18.3 mm (0.72 in) OD, 295.9 mm (11.65 in) long	18.3 mm (0.72 in) OD, 197.4 mm (7.77 in) long
Weight (includes backshell)	0.31 kg (0.68 lb) with batteries	0.22 kg (0.48 lb)
Wetted materials	316 stainless steel, Viton®, FEP* or polyurethane (cable), both models	
Resolution	16-bit A-D converter: 1mm (0.00531% FS) for a 21m (30 psi) sensor, both models	

Sensors:

	Pressure Sensor	Temperature Sensor
Operating principle	integrated silicon strain-gauge pressure sensor	silicon temperature sensor
Ranges / Accuracies**	11 m, 35 ft (103.4 kPa, 15 psi) / ±0.1% of FS 21 m, 69 ft (206.8 kPa, 30 psi) / ±0.05% of FS 70 m, 231 ft (689.5 kPa, 100 psi) / ±0.05% of FS 211 m, 692 ft (2068 kPa, 300 psi) / ±0.05% of FS 351 m, 1153 ft (3447 kPa, 500 psi) / ±0.05% FS	-5 °C to 50 °C (23 °F to 122 °F) / ±0.25 °C
Pressure rating	2x range/3x burst (11 m = 3x range/5x burst)	NA
Operating temperature	-5 °C to 50 °C (23 °F to 122 °F)	-5 °C to 50 °C (23 °F to 122 °F)
Measurement schedules	linear (0.5 sec. minimum), linear average, logarithmic or event (applies to both sensors)	

Ask about the Standard, Advanced and Professional models.

The miniTROLL comes in versions—one for every application and budget, and **always** upgradeable.

How accurate is it?

Calculating accuracy as a distance is easy. Simply multiply the range by the accuracy rating.

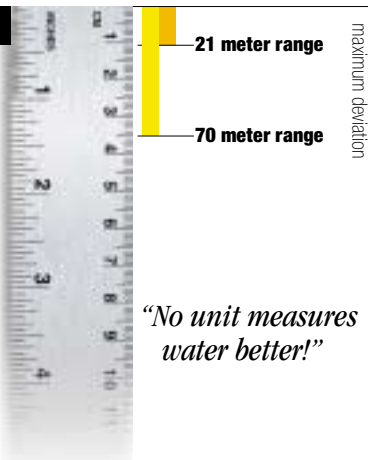
What is the accuracy of a sensor with an 21 meter range?

Answer: 21 m (68.9 ft) x 0.05% = 10.5 mm (0.41 in) of water

Maximum deviation is ±10.5 mm (0.41 in) over the entire pressure range at 15 °C.

Do you correct your level data for fluid density and gravitational acceleration?

With the miniTROLL and Win-Situ 2000 software you get **maximum accuracy** in your level data. Ask for our specific gravity tech note.



"No unit measures water better!"



Environmental Monitoring Systems. **Buy the Best.™**

210 South Third Street • Laramie, WY 82070-0920 USA
Telephone: 307 742 8213 • Fax: 307 721 7598

Call direct for sales or RENT

Talk to our knowledgeable sales staff at

307 742 8213

(International and domestic calls) or

800 4INSITU

(800 446 7488, toll-free in US and Canada)

or visit our web site at

www.in-situ.com

miniTROLLs
and all of In-Situ's fine instruments:
The Monitoring Company L.L.C.
888 880 4862

Printed on recycled paper

Due to continuing product development, this information is subject to change without notice. Copyright © 2001 by In-Situ Inc. All rights reserved. In-Situ, Win-Situ, miniTROLL, Pocket-Situ and Quick-Connect (patents pending) are trademarks or registered trademarks of In-Situ Inc. Windows and Excel are registered trademarks of Microsoft Corporation. Teflon and Delrin are registered trademarks of E.I. DuPont de Nemours and Co. Viton is a registered trademark of DuPont Dow Elastomers.

*FEP (fluorinated ethylene propylene) is the generic equivalent of DuPont Teflon.
**Accuracies listed for 15 °C. Accuracy over entire temperature range from -5 to 50 °C is ±0.2 and ±0.1 for 15 and 30 psi sensors and ±0.8 for 100, 300, and 500 psi sensors.
***Lithium battery, 20 minute sampling interval at 20 °C with 30m (100 ft) of cable or less.



NEW!
Pocket-Situ
so little space, so much fun!

Pocket-Situ is a **NEW** ultra portable user interface for In-Situ instruments. It runs on the Pocket PC and it sure is fun! Forget taking a PC to the field—



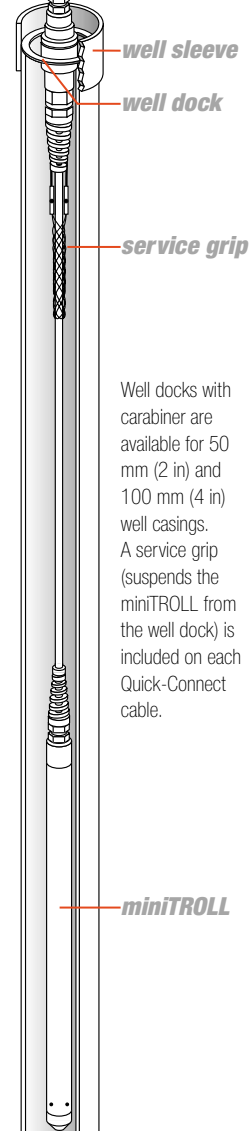
Compaq iPAQ 3600 series Pocket PC pictured running Pocket-Situ. Call for latest models and availability.

take it in your pocket!

Install the miniTROLL in your well and leave it. The miniTROLL is entirely concealed and safe!

Power for up to 11 years***

with Extended-Life Battery Packs. Equipped with or without pass-through communication cable. Both versions fit in 50 mm (2 in) well casings. Long-life 3V lithium or long lasting 9V alkaline batteries.



Well docks with carabiner are available for 50 mm (2 in) and 100 mm (4 in) well casings. A service grip (suspends the miniTROLL from the well dock) is included on each Quick-Connect cable.

Protect your investment.

We have locking well caps for a secure well installation.

