

Q-TRAK™ Plus

IAQ Monitor from TSI



www.tsi.com



Q-TRAK value you can count on ...*plus a whole lot more.*

Accurate, Real-Time Results

GRAPHICS DISPLAY allows simultaneous viewing of all parameters.

AUTOMATIC CALCULATION OF DEW POINT AND WET BULB TEMPERATURE saves time and eliminates errors.

CALCULATE PERCENT OUTSIDE AIR using either CO₂ or temperature.

VIEW SUMMARY INFORMATION on the screen without interrupting an ongoing test.

ENHANCED GRAPHICS display more parameters and user options.

IMPROVED SENSOR STABILITY for more accuracy between field calibrations.

Powerful Data Collection and Reporting

EXPANDED DATA LOGGING CAPACITY stores data with user-selectable logging intervals. Will store up to 33 days of data taken at one-minute intervals.

SERIAL INTERFACE for easy downloading and analysis using TRAKPRO™ Data Analysis Software.

SINGLE-POINT LOGGING for quick building surveys with stored results.

REVIEW STATISTICAL DATA of all logged tests on the instrument screen.

LOCKOUT SWITCH prevents tampering during unattended operation.

Easy to Use

MENU-DRIVEN USER INTERFACE allows for future expansion of functions.

ON-SCREEN, STEP-BY-STEP INSTRUCTIONS make field calibration fast and easy.

ON-SCREEN PROMPTS guide the user through operations.

BACKLIT DISPLAY for easy viewing in a variety of lighting conditions.

ADJUSTABLE STRAP for secure, one-handed operation.





TEMPERATURE SENSOR measures from 32° to 122°F with accuracy to 0.1°F.

CO SENSOR detects concentrations from 0 to 500 ppm with 0.1 ppm resolution.

NEW HUMIDITY SENSOR provides greater stability for more reliable readings. Choose from wet bulb, dew point and relative humidity values.

DUAL-WAVELENGTH NDIR SENSOR compensates for drift and temperature variables when measuring CO₂.



Probe support stand for stationary use. Optional combination instrument stand/wall mount adapter also available.



Ergonomic hand strap allows secure, one-handed operation.



Auxiliary port permits use of an optional, secondary temperature sensor.



Calibration collars make recalibrating simple and quick in the field.

Models 8552 Q-TRAK Plus and 8554 Q-TRAK Plus with CO Specifications

CO₂:

Sensor type Non-dispersive infrared (NDIR)
 Range 0 to 5,000 ppm
 Accuracy ± (3% of reading +50 ppm)¹
 Resolution 1 ppm
 Response time 20 seconds²

Temperature:

Sensor type Thermistor
 Range 32 to 122°F (0 to 50°C)
 Accuracy ±1.0°F (0.6°C)
 Resolution 0.1°F (0.1°C)
 Response time 30 seconds³
 Displayed units °F or °C (user-selectable)

Humidity:

Sensor type Thin-film capacitive
 Range 5 to 95% RH
 Accuracy ±3% RH⁴
 Resolution 0.1% RH
 Response time 20 seconds³

CO:

Sensor type Electro-chemical
 Range 0 to 500 ppm
 Accuracy ± 3% of reading or 3 ppm, whichever is greater⁵
 Resolution 0.1 ppm
 Repeatability ± 2% of reading
 Response time < 60 sec to 90% of final value

Operating temperature: 41 to 113°F (5 to 45°C)
 Storage temperature: -4 to 140°F (-20 to 60°C)
 Display time constant: Adjustable from 2 to 60 seconds
 Data logging: 48,671 data points (up to 33 days of CO, CO₂, temperature, and humidity once/minute), 440 separate single data points (sample mode)
 Logging interval: Adjustable from 1 second to 1 hour

External dimensions: 4.2 in. × 7.2 in. × 1.5 in.
 (107 mm × 183 mm × 38 mm)

Probe length: 12.3 in. (31.3 cm)
 Probe diameter: 3/4 in. (1.9 cm)
 Weight (with batteries): 1.3 pounds (0.59 kg)
 Display: 128 × 64 pixel graphic display
 Serial interface: RS-232 9600 baud

Power:

AC AC adapter (7.2 VDC, 320 mA)
 Battery Four AA-size batteries (included)
 Battery run-time 20 hours with alkaline batteries

¹ At 77° F (25°C). Add uncertainty of ±0.2%/°F (0.36%/°C) for change in temperature.

² For 63% of final value for 500 ppm step change.

³ For 90% of final value at an air velocity of 2 m/s.

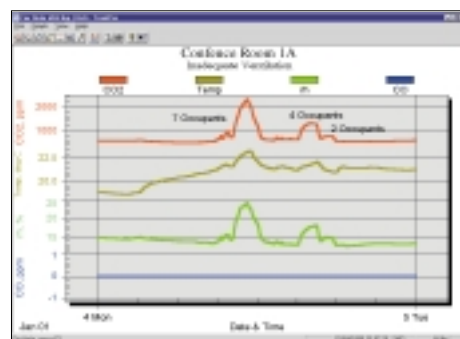
⁴ Includes ±1% hysteresis.

⁵ At calibration temperature. Add uncertainty of ± 0.28%/°F (0.5%/°C) for change in temperature.

Model	Description
8552	Q-TRAK Plus Indoor Air Quality Monitor and accessories includes: Carrying Case, Probe Stand, Alkaline Batteries, TRAKPRO Software, Computer Cable, Calibration Certificate, CO ₂ Calibration Collar, CO Calibration Collar, Operation and Service Manual, AC Adapter and Two-Year Warranty
8554	Q-TRAK Plus Model 8552 with CO Sensor

Optional Accessories

Model	Description	Model	Description
801664	Auxiliary Temperature Sensor	1206526	Instrument Stand
8924	Thermal Paper for Model 8925HS Printer	8925HS	Portable Printer



Easy-to-use TRAKPRO™ Data Analysis Software stores, organizes and reports test results.

Distributed/Represented by



TSI Incorporated
 Telephone: 800 777 8356
 or 651 490 2711
 Fax: 651 490 2874

Mailing Address:
 P.O. Box 64394
 St. Paul, MN 55164 USA

Shipping Address:
 500 Cardigan Road
 Shoreview, MN 55126 USA

Website: www.tsi.com
 E-mail: answers@tsi.com

