

# HEAT STRESS MONITORS

- + QUESTEMP° 32/34/36
- + QUESTEMP° 44/46/48N

QUESTemp° heat stress monitors provide trusted and professional grade environmental measurements to protect workers, athletes and others from the dangers of extreme temperatures. Rugged and easy to use, QUESTemp° instruments provide accurate and real-time readings for WBGT indoor/outdoor, relative humidity and heat index, all recorded into a live data log.



## Features

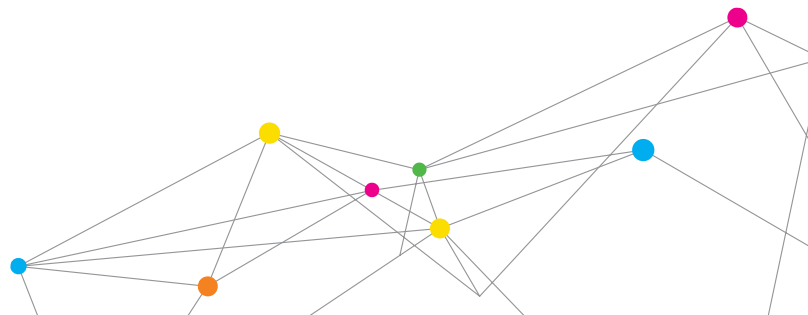
- + Utilizes WBGT sensing technology
- + QUESTemp° models 32, 34 and 36 equipped with wet bulb, dry bulb, globe bulb temperature sensing
- + QUESTemp° models 44, 46, 48N equipped with waterless wet bulb, dry bulb and globe bulb temperature sensor
- + QUESTemp° model 46 displays stay times for work/rest ratios per ACGIH TLV, U.S. Navy PHEL charts, U.S. Navy/Marine Corp. Ashore Flag Conditions, and EPRI action limits
- + IP 54 ingress rating helps protect unit from exposure to dirt, dust, oil and water

## Applications

- + Worker heat exposure
- + Routine monitoring
- + Military training
- + Athletics
- + Agricultural

## PRODUCT SUMMARY

Choose Your Model	Natural Wet Bulb Models			Waterless Wet Bulb Models		
	QT°32	QT°34	QT°36	QT°44	QT°46	QT°48N
Displays WBGT results	X	X	X	X	X	X
Datalogs and connects to Detection Management Software		X	X	X	X	X
Displays work/rest stay-time information			X		X	X



# HEAT STRESS MONITORS

+ QUESTEMP° 32/34/36  
+ QUESTEMP° 44/46/48N



## PRODUCT COMPARISON

	Natural Wet Bulb Models			Waterless Wet Bulb Models		
	QT°32	QT°34	QT°36	QT°44	QT°46	QT°48N
<b>Measurement Parameters</b>						
Dry bulb, wet bulb and globe temperatures, relative humidity	+	+	+	+	+	+
Air velocity			o		o	
WBGT (indoor) index	+	+	+	+	+	
WBGT (outdoor) index	+	+	+	+	+	+
Heat index / HUMIDEX	+	+	+	+	+	
Temperature reading: Celsius or Fahrenheit	+	+	+	+	+	+
Data logging intervals: 1, 2, 5, 10, 15, 30 or 60 minutes		+	+	+	+	+
Event logging mode						+
Display languages: Choose from English, French, Spanish, Italian, and German			+		+	+
Head-Torso-Ankle Weighted Average WBGT (optional with tri-sensors)	o	o	o	o	o	
<b>Operating Temperature Range</b>						
Sensor assembly: -5° C to 100° C (23° F to 212° F)	+	+	+	+	+	+
Electronics: -5° C to 60° C (23° F to 140° F)	+	+	+	+	+	+
<b>Output</b>						
RS-232 serial printer / computer interface; Parallel printer interface						
<b>Power Source (All include AC power adapter wall power cube)</b>						
9V disposable batteries; Hours of battery life:	140	140	140	80	80	80
NiMH rechargeable battery; Hours of battery life:	300	300	300	160	160	160
<b>Mechanical</b>						
D-ring with lanyard attachment. Allows for hands-free monitoring						+
Tripod mount / remote sensor bar.						
Allows for up to 61 m (~200 ft) long distance measurement	+	+	+	+	+	+
IP54 water & dust ingress protection rating	+	+	+	+	+	+
Case size (including mounted sensor assembly)						
23.4 x 18.3 x 7.6 cm (9.2" x 7.2" x 3")	+	+	+	+	+	+
Weight: 1.2 kg (2.6 lb) with mounted sensor assembly	+	+	+	+	+	+
<b>CE Mark</b>						
	+	+	+	+	+	+

Key: + Feature or Parameter of Unit  
o Optional

All specifications are subject to change without notification.

Quest is a trademark, and TSI and the TSI Logo are registered trademarks of TSI Incorporated.



TSI Incorporated - Visit our website [www.tsi.com](http://www.tsi.com) for more information.

USA Tel: +1 800 874 2811 India Tel: +91 80 67877200  
UK Tel: +44 149 4 459200 China Tel: +86 10 8219 7688  
France Tel: +33 1 41 19 21 99 Singapore Tel: +65 6595 6388  
Germany Tel: +49 241 523030